

## TYXIA 611 pack

EN **Wireless two-way pack**



www.deltadore.com



2704650 Rev.02



### Technical characteristics

#### TYXIA 5610

- Power supply 230 V~ 0.6 VA
- Class II insulation
- Stand-by consumption: 0.06 W
- Storage temperature: -10 °C / +70 °C
- Operating temperature: -10 °C / +40 °C
- IP 40 (flush mounting box)
- Dimensions: 41 x 36 x 14.5 mm
- X3D wireless remote control device: 868.7 MHz to 869.2 MHz
- Maximum wireless power < 10 mW Category 2 receiver

#### TYXIA 2310

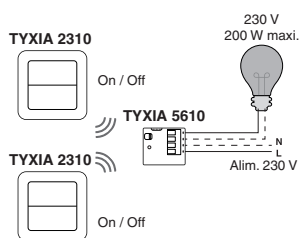
- CR 2430 lithium battery power supply (included), Battery life 10 years depending on use
- Storage temperature: -10 °C / +70 °C
- Operating temperature: -10 °C / +40 °C
- IP 40 - IK 04
- Dimensions: 80 x 80 x 11 mm
- X3D wireless remote control device: 868.7 MHz to 869.2 MHz
- Maximum wireless power < 10 mW Category 2 receiver

EN

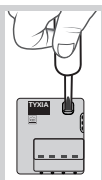
The TYXIA 611 pack enables you to create a two-way lighting without an existing switch.

### Recommendations

**IMPORTANT:** the control wires are not insulated from the mains power supply. All connected equipment must be marked CE and meet the requirements of the low voltage devices as well as assembly recommendations. Local control wires can be extended up to 10 m (separate from the 230 V).



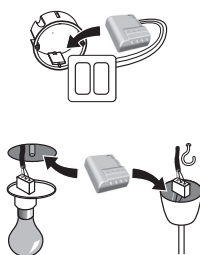
Use an electrically isolated tool to perform the actions on the receiver configuration button.



### Step 1 - Install your products

230V~ **Switch off the installation power supply.**  
**OFF**

You can install the lighting receiver in a flush-mounted box, behind a switch or control push-button (automatic detection on use) or behind a ceiling.



#### 1.1 Connection instructions for terminals 1 2 3 4.

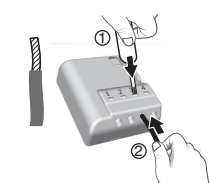
Strip the wires while respecting the strip length specified on the product.

#### 1.1.1 Solid wires



Push the wire fully into the terminal.

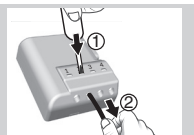
#### 1.1.2 Stranded wires



Using a 2.5 mm screwdriver, press the terminal button then insert the wire.

#### Removal recommendations

Switch off the power supply.  
Use a 2.5 mm screwdriver to press the terminal button before removing the wire.

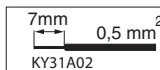


#### 1.2 Connection instructions for IN1 - COM - IN2 terminals

Use the wires supplied.  
Push the wire fully into the terminal.

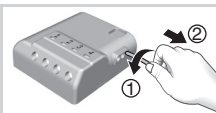


Do not strip the wires when they are connected to the product as you could damage the internal connector.



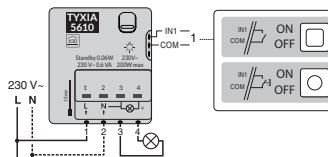
#### Removal recommendations

Turn the wire while pulling on it.



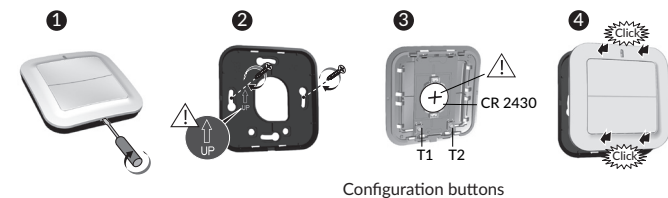
#### 1.3 TYXIA 5610 connection

Connect:  
The light to terminals 3 and 4.  
The switch to the IN1 - COM terminals (input 1).  
The 230 V power supply to terminals 1 and 2.  
Switch the installation power back on to continue with the association operation.



#### 1.4 TYXIA 2310 installation

This unit must not be placed on a metal surface.



### Step 2 - Determine the operating mode of the TYXIA 2310

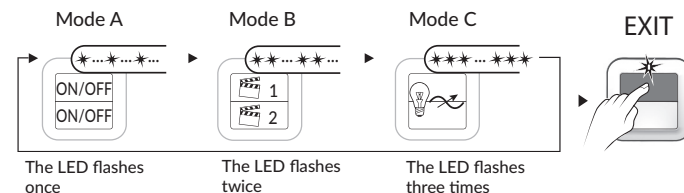
The operating mode of the TYXIA 2310 is, by default, mode A, i.e. for controlling 2 ON/OFF lighting channels.

**IMPORTANT:** If you approve this selection, go directly to step 3, 'Associate your products'.

Otherwise, determine the operating mode suited to your installation.  
Mode B: Scenario mode to simultaneously control different receivers.

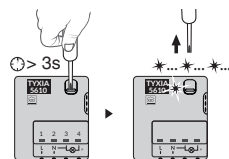
Mode C: Dimmer mode to control a dimmer lighting channel.

Open the unit.  
Press the T2 button several times to select your desired operating mode.



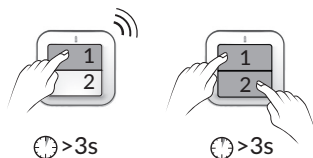
### Step 3 - Associate your products

- 1 Set the TYXIA 5610 receiver to association standby mode.  
Press and hold the button for 3 seconds until the LED flashes, release.

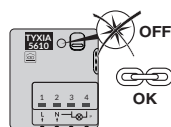


- 2 On the TYXIA 2310 emitters, send the association order:

Mode A or B: Press the button of the channel you want to associate for 3 seconds (1 or 2).  
Mode C: Press the 1 and 2 buttons at the same time and hold for 3 seconds.



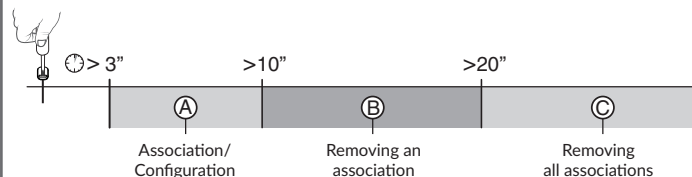
- 3 When the receiver LED has stopped flashing. The products are now associated.



Number of associated emitters: 16 maximum

### Troubleshooting

#### Summary of functions accessible using the receiver button



#### Press and hold the button for x seconds

##### A Association/Configuration

Press the receiver button for 3 seconds until the LED flashes, release.

##### B Remove an association

On the TYXIA 5610 receiver:

Press the receiver button for 10 seconds until the LED flashes rapidly, release.

On the TYXIA 2310 emitter:

Mode A or B: Press the button of the channel you want to delete for 3 seconds (1 or 2).

Mode C: Press the 1 and 2 buttons at the same time and hold for 3 seconds.

##### C Remove all associations

Press the receiver's button for 20 seconds.

Press and hold until the LED switches off after the rapid flashing phase, release.

The receiver has no wireless connection.

### The receiver locks in off mode

When an overload is detected, the product locks in off mode for 30 seconds before authorising a new activation. The LED flashes rapidly throughout this phase.

To exit the receiver from this secure mode, replace the bulb connected by a bulb with lower power (refer to compatibility table).

### Replacing the batteries



The red LED flashes each time you press = Battery fault

### Compatibility

- 1 230 V halogen or 230 V incandescent bulbs.
- 2 230V energy-saving compact fluorescent bulbs.
- 3 230V LED bulbs.
- 4 Very low voltage 12V halogen or LED bulbs with AC or DC electronic transformer.
- 5 Very low voltage 12V halogen bulbs with ferromagnetic or toroidal transformer.
- 6 Fluorescent tube.

230 V ~ 50 Hz							
①	②	③	④	⑤	⑥		
200 W	100 W	100 W	100 W	100 W	150 W	100 W	Hi-Fi



An additional user guide is available on the TYXIA 611 page of the DELTA DORE website.